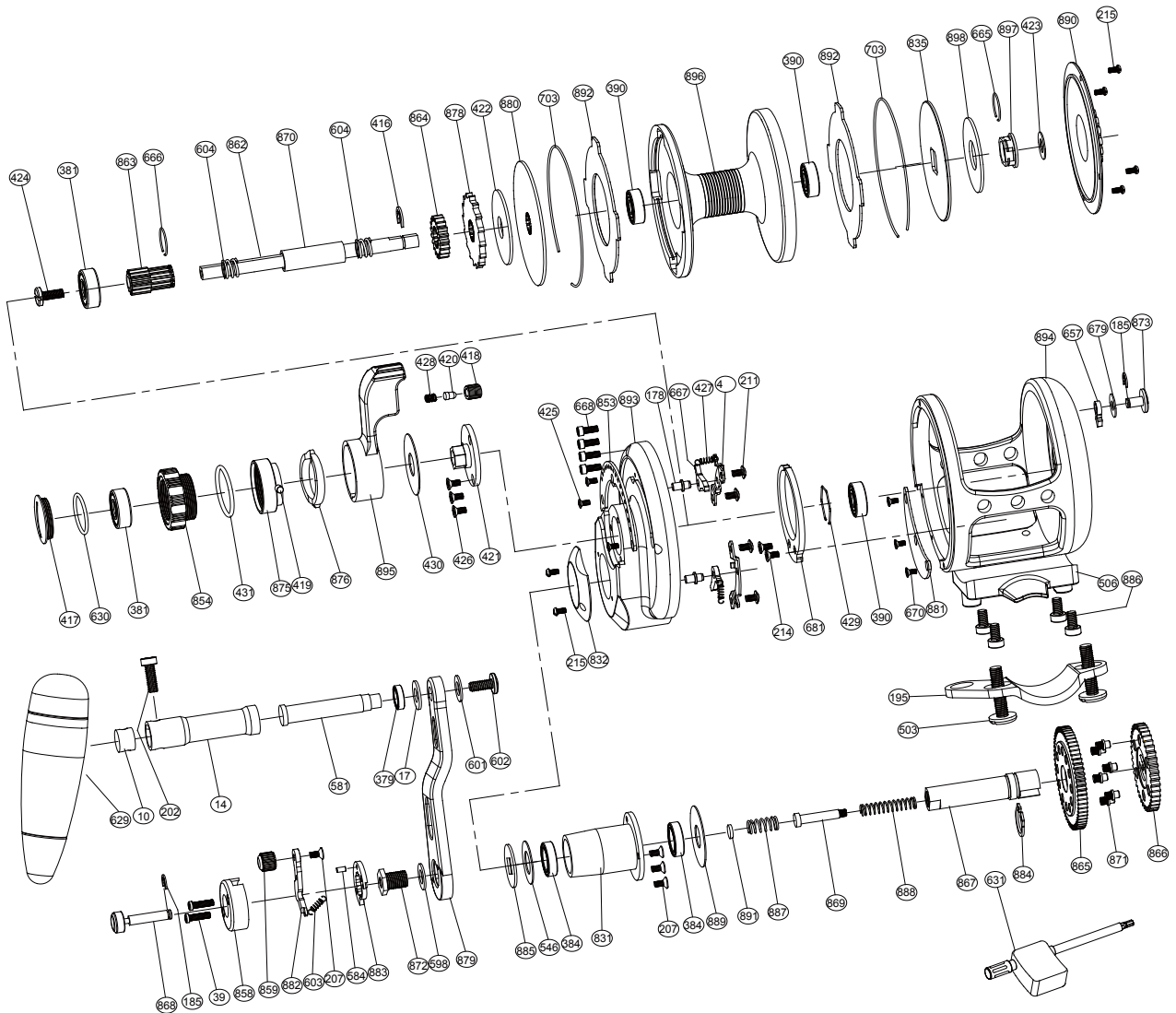


**Sealion Series Lefty Dual Drag Jigging Reel**

**SL10DL**



No.	PARTS NAME	No.	PARTS NAME	No.	PARTS NAME
4	Set plate	503	Fixed screws	866	Drive gear-low speed
10	Handle shaft retainer	506	Reel foot	867	Drive shaft
14	Handle shaft coat	546	Drive shaft washer	868	Push button shaft
17	Washer 2	581	T handle nail	869	Slide pole
39	Button screw	584	Push nail	870	Spool cannulation
178	Set plate nail	598	Handle bolt washer	871	Variable-speed pin
185	"E" washer	601	Washer 3	872	Handle bolt
195	Rod clamp	602	Handle knob screw 2	873	Strike alert lever
202	Handle knob screw 1	603	Push spring	875	Pre-program key
207	Push slice screw	604	Spool shaft spring	876	Pre-program plate
211	Set plate screws	629	Handle knob	878	Anti-reverse ratchet
214	Alert ratchet screws	630	"O" ring	879	Handle arm
215	Cover screw	631	Wrench	880	Front drag plate
379	Ball bearing (S117)	657	Alarm sound gear	881	Close cover
381	Ball bearing (S606)	665	Big ring	882	Push slice
384	Ball bearing (S6700)	666	Small ring	883	Stopping slice
390	Ball bearing (S696)	667	Anti-reverse dog	884	"C" washer
416	"E" washer	668	Side plate screws	885	Handle washer
417	Drag knob cover	670	Close cover screws	886	Reel foot screws
418	Sound coat	679	Washer 1	887	Drive shaft spring
419	Pre-program key pin	681	Alert ratchet	888	Shaft insert spring
420	Sound nail	703	Spool ring	889	Drive shaft coat washer
421	Bearing cover	831	Drive shaft coat	890	Cover
422	Spool spring washer	832	Drive shield	891	Variable-speed washer
423	Drag plate washer	835	Rear drag plate	892	Drag plate
424	Spool shaft screw	853	Embedded clip	893	Right plate
425	Screw embedded clip	854	Drag tension knob	894	Frame
426	Screw for bearing cover	858	Button basement	895	Drag control lever
427	Stopping sock spring	859	Button lever knob	896	Spool
428	Sound nail spring	862	Spool shaft	897	Drag plate undersleeve
429	Bearing ring	863	High speed pinion gear	898	Spool spring washer
430	Drag control lever washer	864	Low speed pinion gear		
431	"O" ring	865	Drive gear-high speed		